



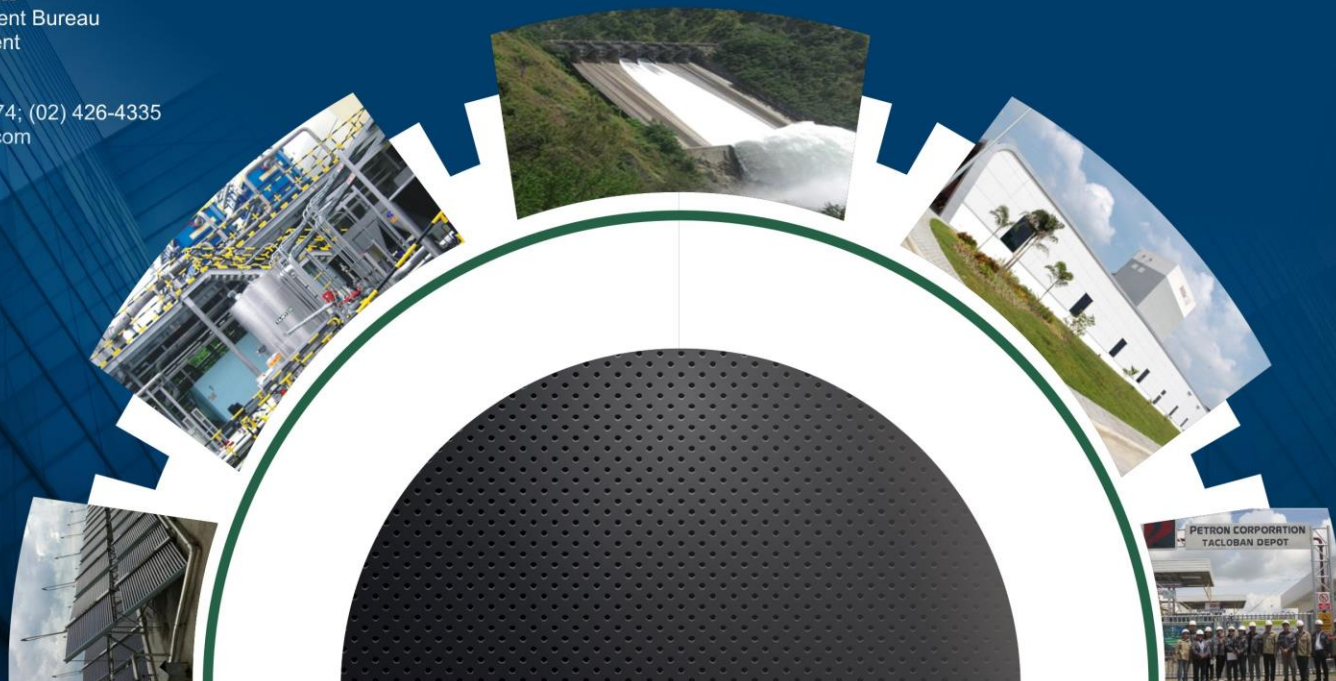
## The Philippine Environment Partnership Program (PEPP):

**Recognizing Industries with Superior Environmental Performance**



### **Philippine Environment Partnership Program**

Environmental Management Bureau  
Department of Environment  
and Natural Resources  
[www.emb.gov.ph](http://www.emb.gov.ph)  
Telefax Nos: (02) 928-4674; (02) 426-4335  
Email: [info.pepp@gmail.com](mailto:info.pepp@gmail.com)



## ABOUT THE SEAL

The DENR Official Seal of Approval is given to individual establishments that go beyond compliance and demonstrate superior environmental performance. It signifies that the operation of an establishment is environment-friendly.

The aspiring applicant for this recognition should be able to prove that they are deserving to receive the Seal. They should: not have pending case at the Pollution Adjudication Board (PAB) within the last three years prior to the date of application, have complied with all applicable environmental laws, rules and regulations, and have proven records of superior environmental performance.





# PEPP

**The PEPP**, pursuant to Department of Environment and Natural Resources (DENR) Administrative Order No. 2003-14 is a partnership program with industries, in cooperation with other environment-related agencies, aimed to support industry self-regulation towards improved environmental performance.

## OBJECTIVES

- To promote mandatory self-monitoring and compliance with environmental standards and to encourage voluntary self-regulation;

- To provide incentives and package of assistance to establishments particularly the Small and Medium Enterprises (SMEs) to achieve pollution prevention/cleaner production process;

- To build or enhance the capability of establishments and/or their associations on self-regulation; and

- To strengthen the capability of the DENR-Environmental Management Bureau and other environmental agencies in implementing the PEPP towards self-regulation.

## THE PHILIPPINE ENVIRONMENT PARTNERSHIP PROGRAM



## PEPP "Tracks"

There are two tracks or classifications under the PEPP. These are:

**Track 1.** Companies going beyond compliance and are driven by competitiveness, image and supply chain requirements to improve performance (i.e., large companies)

**Track 2.** Companies that are currently unable to comply with regulations, and are driven by survival needs (mostly SMEs)

## How to Qualify for "Track 1"

Individual establishments should meet the following requirements:

1. No case/s with the PAB/Laguna Lake Development Authority within the last three years prior to application
2. In full compliance with all applicable environmental laws, rules and regulations
3. With proven records of superior environmental performance

## Regulatory Privileges

1. Relaxation of reportorial requirements (Frequency of submission, Consolidation)
2. Simplified requirements for securing Environmental Compliance Certificate (ECC) for an expansion project
3. High profile recognition award with DENR Official Seal of Approval

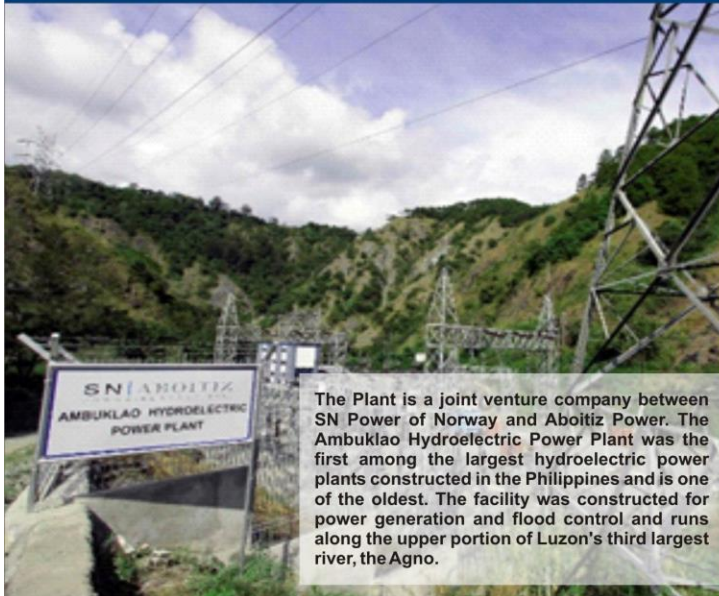
## AWARDEES OF 2014 DENR OFFICIAL SEAL OF APPROVAL





**SN ABOITIZ POWER - Benguet, Inc.**  
**Ambuklao Hydro Electric Power Plant**

**Nature of Business: Hydro Power Plant**  
**Site Address: Brgy. Ambuklao, Municipality of Boklod, Benguet**



The Plant is a joint venture company between SN Power of Norway and Aboitiz Power. The Ambuklao Hydroelectric Power Plant was the first among the largest hydroelectric power plants constructed in the Philippines and is one of the oldest. The facility was constructed for power generation and flood control and runs along the upper portion of Luzon's third largest river, the Agno.

**SN ABOITIZ**  
 POWER-BENGUET, INC.  
 AMBUKLAO

They conducted massive tree planting with species such as Benguet Pine Tree which is endemic to the area and Coffee Arabica for livelihood purposes. They celebrated environmental events like International Earth Day by conducting clean-up drive in Ambuklao Dam aside from their regular clean-up schedule, and tree planting during World Environment Day and Philippine Arbor Day.



As part of their Waste Management Program, the plant strategically placed color-coded garbage bins inside the area and established Material Recovery Facility.



The plant installed Sewage Treatment Plant for their domestic effluent and conduct ground water monitoring to ensure that they will not contaminate the water body and aquifer.





**SN ABOITIZ POWER - Benguet, Inc.**  
**Binga Hydro Electric Power Plant**

Nature of Business: Hydro Power Plant  
 Site Address: Brgy. Tinongdan, Municipality of Itogon, Benguet



**SN ABOITIZ**  
 POWER-BENGUET, INC.  
 BINGA

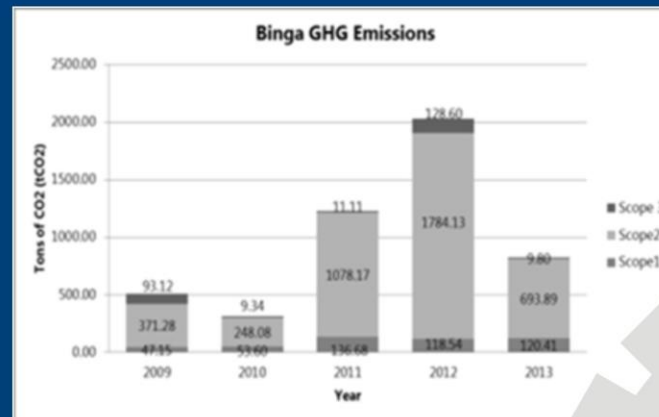
The Binga Plant is also a joint venture company between SN Power of Norway and Aboitiz Power. It generates 130 MW of clean energy and the electricity produced is traded at the wholesale electricity spot market.



To ensure that they will not impair the environment from their operation, the plant regularly conducts emission testing for the standby generator sets and company-owned vehicle, installed a ground monitoring well, and conducts regular reservoir water testing.



Regular conduct of dam clean-up drives and tree planting activities during environmental celebrations



Being registered a Clean Development Mechanism (CDM) Project, the plant regularly monitors its Greenhouse Gas (GHG) emissions. They conduct regular maintenance of vehicles and fuel-driven equipment, and implement Energy Conservation Programs such as, switching off of office appliances, reporting of unwanted occurrence for inefficient use of resources, and put up signages on the conservation of paper, electricity and water.



**NESTLE PHILIPPINES, INC.**  
**Tanauan Factory**

**Nature of Business: Beverage Manufacturing Industry**  
**Site Address: 2nd St., First Philippine Industrial Park,**  
**Tanauan City, Batangas**



The Nestlé Tanauan Factory's vision is to be the factory that leads the way in inspiring, creating and attracting excellence while its mission is to ensure availability of safe products for their customers with consistent quality for value and money. The Factory creates shared values with their community and enables and nurtures its employees as well as sustains highly efficient operations as part of Nestlé in the Philippines.



Solar-assisted Air Conditioning Units - These units utilize renewable source of energy, which is the sun, to aid in providing the energy requirement of the air conditioning unit.



The plant installed Membrane Bio Reactor Technology for their Waste Water Treatment Plant. This technology not only assures compliant effluent quality but is also suitable for recycling. The effluent is also used in cooling tower as alternate to freshwater.

The facility installed Solar Heater at the top of their Administrative Building. It intends to produce hot water for the social block area. In effect, it utilizes a renewable source of energy, which is the sun, instead of using steam or electricity.







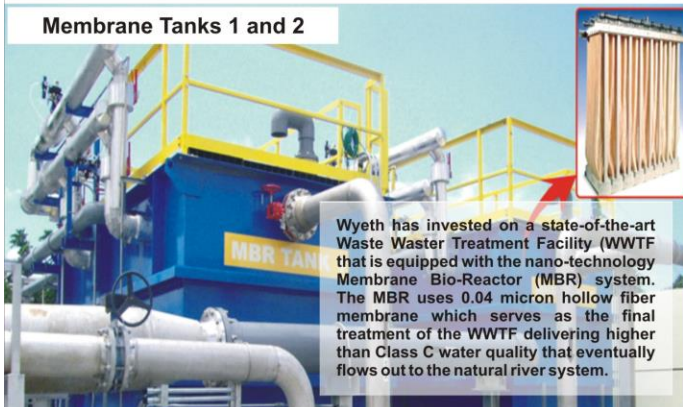
Wyeth Philippines, Inc. (WPI), formerly Pfizer Nutrition, is part of Nestlé S.A. (Switzerland). WPI develops premium-quality nutritional products, scientifically-designed to meet the needs of infants and young children, as well as pregnant and lactating mothers. As pioneers in infant nutritional science, their mission is to provide the best nutritional support for future, healthy outcomes. For nearly a century, WPI has leveraged clinical rigor, scientific research, world class manufacturing and product safety standards to drive scientifically-sound solutions that offer parents confidence, help nourish children and support their healthy futures.

**Wyeth**  
Philippines

The plant also practices the 3Rs (Reduce, Reuse and Recycle). Aside from the plant's generated recyclable wastes, the employees are encouraged to donate their recyclable materials in their homes. The collected recyclable materials are donated to the Tahanang Walang Hagdan to help promote livelihood programs for persons with disability that can be used in producing hand-made paper by-products.



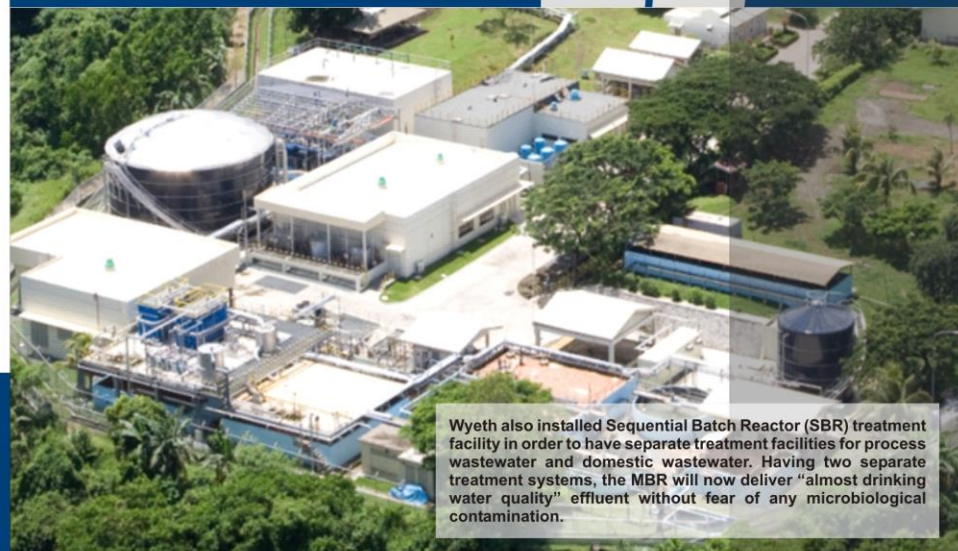
**Membrane Tanks 1 and 2**



Wyeth has invested on a state-of-the-art Waste Water Treatment Facility (WWTF) that is equipped with the nano-technology Membrane Bio-Reactor (MBR) system. The MBR uses 0.04 micron hollow fiber membrane which serves as the final treatment of the WWTF delivering higher than Class C water quality that eventually flows out to the natural river system.



As part of their Corporate Social Responsibility (CSR), the proceeds collected from the Balik-Bateria Program were donated to school for the renovation of comfort rooms and the conduct of Advance Computer Course Seminar for the Teachers.



Wyeth also installed Sequential Batch Reactor (SBR) treatment facility in order to have separate treatment facilities for process wastewater and domestic wastewater. Having two separate treatment systems, the MBR will now deliver "almost drinking water quality" effluent without fear of any microbiological contamination.



# GREEN CORE GEOTHERMAL, INC, TONGONAN Geothermal Power Plant

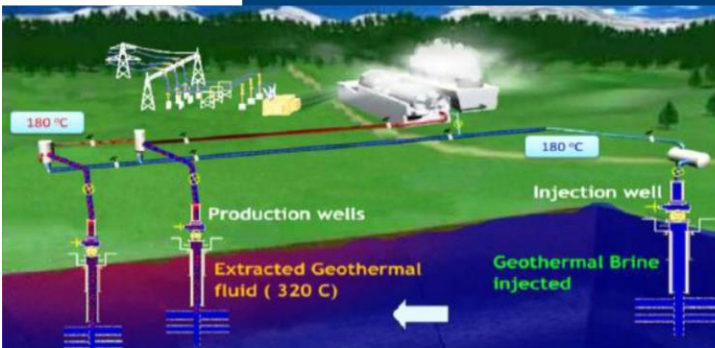
Nature of Business: Geothermal Power Plant  
Site Address: Brgy. Lim-ao, Municipality of Kananga, Leyte



The GCGI-TGPP is a continuous awardee of DENR Official Seal of Approval from 2011 to 2013. The plant was commissioned in July 2, 1983 and generates 112.5 MW of electricity.

Their vision is to become the global leader in geothermal energy as they strengthen their leadership in country renewable energy industry. Thus, they are

to provide the present and future generations a better life with clean and renewable energy. They are also committed to promote customer and investor interests, employee development, community welfare and environmental stewardship at all times.



Aside from the Environmental Policy being implemented by the plant, it also established Zero Discharge System Policy wherein processed water will be re-injected to the ground through the well, where it is reheated for later use.



For its Greening Program, ornamental plants are installed at the concrete roof decks, and they called it "Sky Garden." They regularly conduct tree planting activities.



GCGI-TGPP has continually supported environmental programs such as Tree Planting, Coastal Clean-Ups, Earth Hour and Earthday



The GCGI-TGPP has sustained and improved environmental management programs in Electricity, Water and Paper Conservation thru posting signages and continuous reminders to the employees.



PLEASE DON'T THROW YOUR  
USED PAPER TO THE THRASH  
PLACE IT HERE FOR RECYCLING





## PETRON CORPORATION - Ormoc Depot

Nature of Business: Oil Depot  
Site Address: Brgy. Linao, Ormoc City, Leyte



The Petron Corporation is the largest oil refining and marketing company in the country, supplying more than a third of the country's oil requirements. Their world class products and quality services fuel the lives of millions of Filipinos. They are dedicated and passionate about their vision to be the leading provider of total customer solutions in the energy sector and its derivative businesses.

The depot has continuously implemented environmental activities on pollution prevention such as mangrove planting, coastal and estero clean-up in coordination with EMB Regional Office and other government agencies together with the host communities.



Its line of operation is distribution of fuel oil and diesel in bulk to industrial customers and service stations covered within its jurisdiction. The depot also refill and sell Liquefied Petroleum Gas (LPG) brand Gasul through an extensive dealership network.



Petron-Ormoc Depot is fully committed of its responsibility of conducting operational activities in a manner that preserves the environment and protects the health and safety of all their employees and stakeholders. It believes that safe, healthy, and environment-friendly operations are keys to the long-term sustainability of our business.



Their commitment to the Environment is governed by their corporate Safety, Health and Environment (S-H-E) policy which is protecting and preserving the natural environment as well as promoting the health, safety and security of their people, customers, suppliers, contractors and the general public. This commitment is the key to long-term sustainability of their business and governs the way they operate.

